

# Property Off Plan - For Sale

[www.mountvema.com](http://www.mountvema.com)

13, 1<sup>st</sup> Street, BV 074C, Mount Vema  
(Floating City of Mount Vema Developments)

## Four Bedroom Floating Property Off Plan

A charming planned four bedroom floating family house, approximately 245.2 sq m (2,639 sq ft) over two floors, with excellent entertaining space, including a large kitchen and dining room on the ground floor. In addition, the property will have the advantage of a lovely terrace, garden and swimming pool.

The property will benefit from the shopping and transport facilities of the area and 24hrs security. Only a walking distance from restaurants, schools, medical center and the modern mooring facilities for yachts and workshop teams, with 24hr Diesel & Pump-Out Dock.

### The Royal District of Bella Vista

Bella Vista – will be a high value residential area divided into west and east side with predominantly large houses with gardens and lawns, wide boulevards with each house backing onto its own dock and mooring for boats.

#### TERMS:

**Tenure:** Leasehold - 99 years

**Local Authority:** Vema Seamount Authority

**Administrative Division:** District of Bella Vista

**Price:** 350,000 Veman golles (\$700,000 USD)

**Reservation Price:** \$2,000 US dollars, which can be paid monthly in instalments (\$100 per month) or as a single payment. Mortgage finance available. No deposit required.

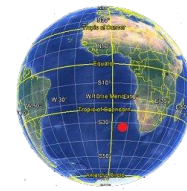
**District construction completion:** 2019

#### Finance:

Once you have chosen a property and paid the reservation fee of \$2,000 USD or the equivalent in other currency, Mount Vema can help you secure a mortgage deal with a Mount Vema bank such as the RBMV – Royal Bank of Mount Vema.

No mortgage deposit required. You can buy to move in when completed or you can buy to let.

**This Offer of 0% Deposit Mortgage expires on:** December, 31, 2016.

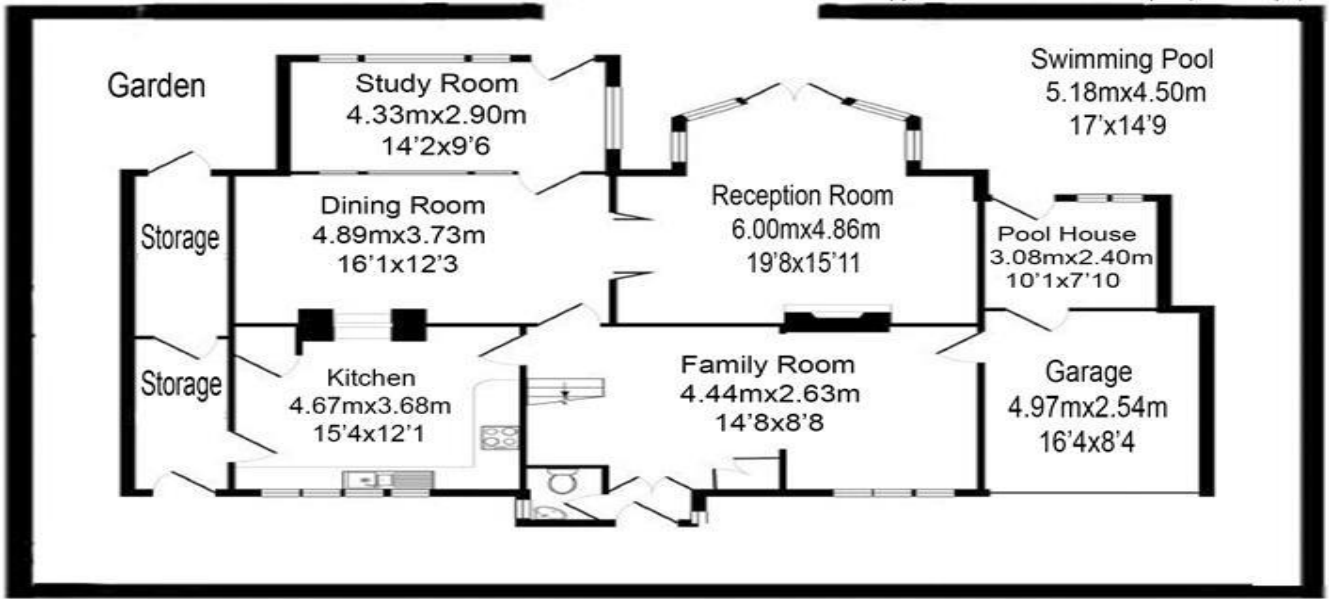


Vema Seamount



Ground Floor

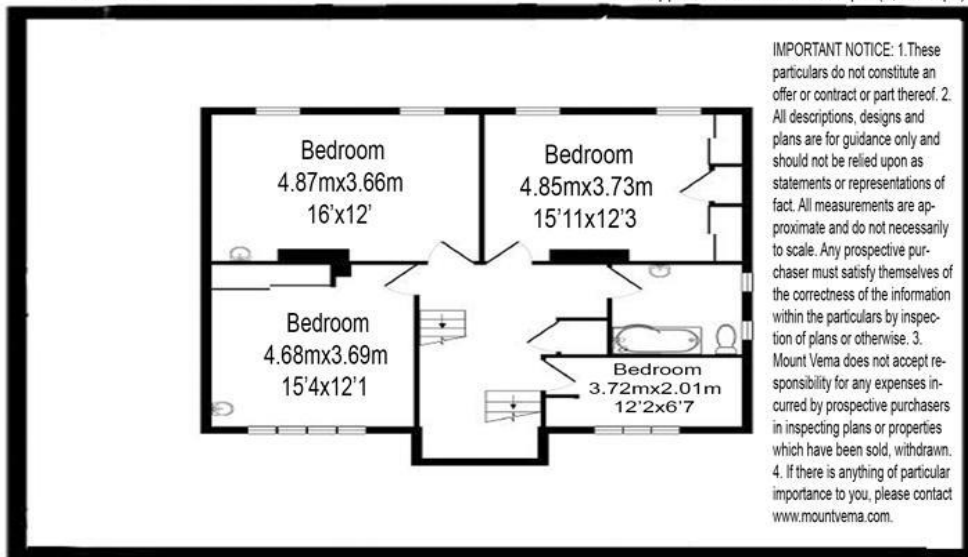
Total Approx. Floor Area 245.2 sq m (2,639 sq ft).



City of Mount Vema Development Plans

First Floor

Total Approx. Floor Area 245.2 sq m (2,639 sq ft).



City of Mount Vema Development Plans

